

Q3 REPORT 2020



WELCOME

In March 2020, schools in Malawi were closed due to the pandemic. This means that all our programs stopped because they are school-based. Yes, we were dismayed. A month later, the government started airing radio programs targeting grades/standards 1 to 8. Various studies, however, claimed that most learners were not listening from the radio due to resources or lack of interest. We find this a beautiful opportunity for Rays of Hope and our partners.

Our COVID-19 report had two recommendations. First, we need to invest in Edu-tech approaches, and second, we should consider home-based and community-driven education delivery models. Our team has been busy redesigning activities that respond to the suggested themes. Using low-tech, workbooks, handbooks and tutors, we plan to reach out to over 10,000 students in primary (elementary) schools with our remote program. No, the year 2020 is not a waste! It is an eye-opener for us, and we are very hopeful!

Schools just reopened today (Monday – October 12, 2020). We continue to see that teachers are key players for quality education, and we continue to live our mission.



In this quarter, we have partnered CARE Malawi to train 400 teachers in Mchinji and Ntchisi districts for the next 4 years in numeracy and literacy.

Globally, we know that the year (2020) attracts numerous adjectives from people's reaction to COVID-19. Rays of Hope, as well, has its description of the year 2020 - it is "hopeful!" We are hopeful of the present and the future.

We thank God for His provision, and our partners for their financial support.

Willie Mpasuka
Executive Director

ABOUT RAYS OF HOPE

We exist to transform Malawi by equipping teachers and educate children in public schools.

Our mission is to use a transformative education model to build teachers capacity, support learners and provide financial inclusion solutions to youth for productive life.

Our vision is that every child and youth access transformative education.



OUR APPROACH & GOALS



Academic Innovation

Run after-school programs across 10 primary schools in Blantyre district and work with

800

students

Train
550
teachers in Blantyre rural to reduce technical gaps

Maintain
95%
primary school completion rate among the 10 targeted primary schools in Blantyre.



Academic Inclusion

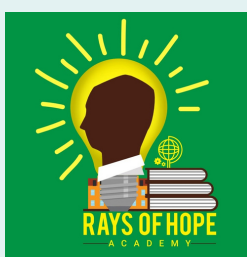
Support
175
secondary school students with bursaries that will guarantee access to secondary school education in various schools in Blantyre.

Run coaching and mentoring activities with
150
secondary schools on our bursary program to remove the non-financial barriers to access secondary school education. Activities include Sexual and Reproductive Health, entrepreneurship, and leadership.



Economic Integration

Reach out to
50
young people with activities meant to increase their ability to engage in economic activities through entrepreneurship training and soft loans.



Rays of Hope Academy

Enrol
20
students in Form 1 by 1 October 2020



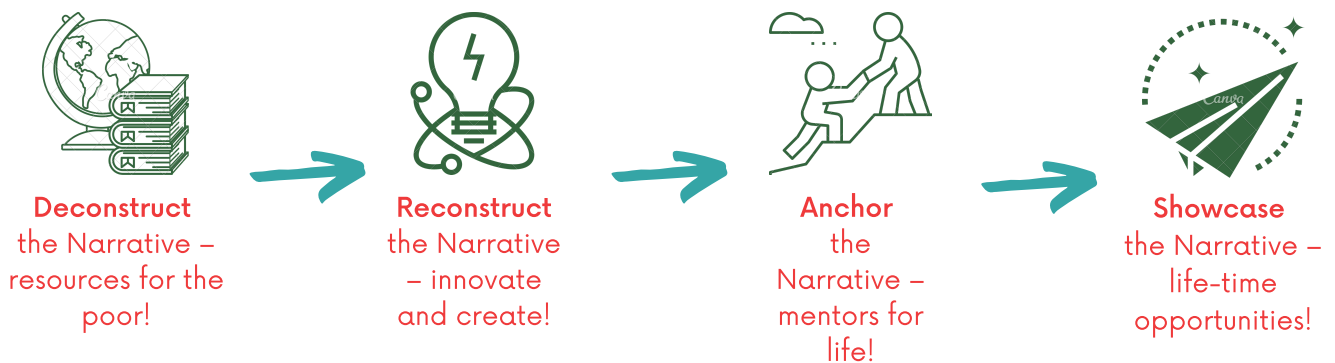
Get the school registered with the government of Malawi and ISAMA (Independent Schools Association of Malawi)

RAYS OF HOPE ACADEMY

The current streams of offering in the Malawi education system, sadly, promotes banking methods of education – that takes away joys of self-discovery.

Rays of Hope Academy is a fee paying secondary school that enables income generation for Rays of Hope Ministries. Our Academy is posed to nurture young and raw talent through an education that is built on meaningful innovation and sincere integrity.

Our education model is built on four pillars:



QUARTERLY PROGRESS

Program Update

Academic Innovation was on hold due to school closures. However, recently, we expanded it to Mchinji and Ntchisi districts in partnership with CARE Malawi.

So far, we have trained 400 teachers from 100 primary schools (across two districts). We expect this to serve 40,000 students.

Community Update

We are thankful to the communities we serve. Six hundred households participated in the survey and gave logistical help. The survey helped us understand the effects of the pandemic. Our key findings were that:

- Over 70% had seen a decline in health due to fears and infrastructure restrictions
- 89% of households has seen a drop in income
- 87% of the households reported a decline in food availability with most families complaining about the loss of school meals
- 75% wanted schools to reopen with precautionary measures



Successes

- We have expanded our teacher-training piece to two other districts in partnership with CARE Malawi – reducing the literacy and numeracy skills gap among teachers.
- We carried-out the COVID-19 survey that interviewed 600 households in the Blantyre district. The survey is shaping the development of our strategic plan to guide the organization with COVID-19 around us.
- 95% of beneficiaries passed the grade 12 national standardized exams.

Challenges

- We failed to implement most of our program activities due to COVID-19 since schools were closed in March.

New Programs / Systems

We redesigned our after-school initiative informed by the survey we commissioned. We are ready to implement a program called: Remote Learning Using Low-Tech program/project. The program plans to reach over 10,000 students from 40 schools in Blantyre.



Partnerships and Advocacy

In this quarter, we have explored several partnerships and our workbooks and handbooks have garnered interest from several organizations because of COVID-19.

First, we are in partnership with four other local organizations

- Center for Youth and Development (CYD)
- Fount for Nations
- Ladder to Learning, and
- Jacaranda Foundation.

The partnership will use our workbooks and handbooks to recoup the academic losses that have been experienced by learners due to COVID-19.

Second, our conversation with World Vision International is at an advanced stage to enter the Memorandum of Understanding (MOU) that will use the workbooks and handbooks as well.

Third, we also in a consortium with CARE Malawi and Micro-Loan that seeks to end child labor in tobacco growing communities in Mchinji and Ntchisi districts. Rays of Hope will lead in the education activities, this is where we are bringing our expertise in teacher training on literacy and numeracy.

Finally, we are also at an advanced stage to sign the MOU with the Blantyre Teachers Training College as both parties see the need for collaboration in teacher training.

Our Team

With the expansion of the program activities in Mchinji and Ntchisi, we have grown the team. We have added six new members to support the growth, the positions are:

- Program Coordinator
- Program Officers (x2)
- Accountant
- Monitoring, Evaluation, Accountability, and Learning (MEAL) Officer
- Administrative Assistant.

So far, they have proven to be an effective and passionate team.

Events & Conferences

The Executive Director attended the virtual Summit organized by the Segal Family Foundation branded "The Future Summit" and Rays of Hope was the featured story. The organization demonstrated the gains of investing in local visionaries in that it becomes a catalyst for real impact. The Summit drew 1600 participants across the world.

OUR IMPACT

Misheck's primary (elementary) school life was hard.

He woke up early in the morning, looked for a day job to earn money to pay for his school fees. He also used the money to put food on the table for his single mother and siblings.

Yet his friend's daily routine was way different. They woke up, went to school, and come home for a filling meal.

He was the only one in his family who went past the primary (elementary) school level of education. His single mother could not put all his siblings through school. In turn, Misheck decided to pay for his school and take care of his family until our program officer heard of the story and followed it up.

We enrolled Misheck in our bursary program. Rays of Hope runs a program called Academic Inclusion that removes barriers (financial and non-financial) for poor students to access secondary education.

Misheck started receiving the scholarship in grade 10 until he took the grade 12 national standardized exams.

He passed with good grades and got into Malawi's prestigious public university.

In Malawi, there are approximately 13,000 secondary school graduates every year and only 3000 places at



university. We can never be proud enough of Misheck's achievement. Thank you, our partners, for your financial support.

FINANCIAL UPDATE

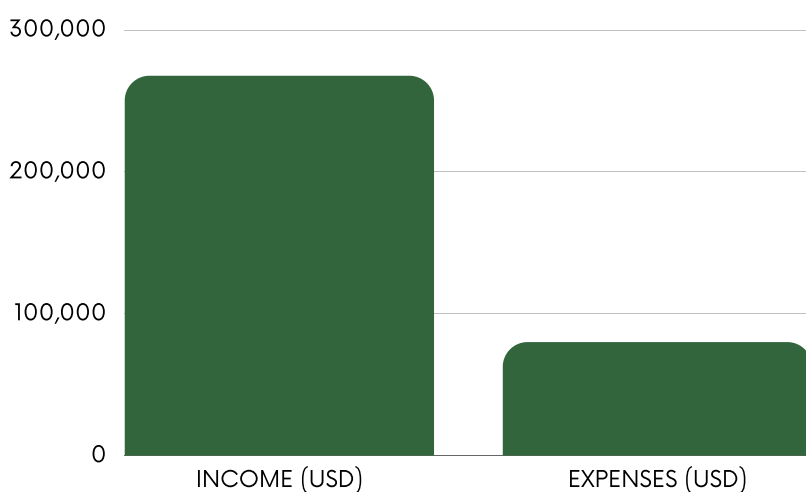
Income & Expenditure for July - September 2020

INCOME	MWK	USD
Balance brought forward	88,568,155	122,162
Funding for the quarter	105,371,639	145,340
	193,939,794	267,503

EXPENDITURE	MWK	USD
Programs	9,491,297	12,826
Administration and personnel	49,523,053	66,923
	59,014,350	79,749

ASSETS	MWK	USD
Furniture	12,477,499	16,861
Equipment	7,859,772	10,621
Motorcycle	3,450,000	4,662
Motor vehicle	12,000,000	16,216
Land & Building	133,184,767	179,979

Income versus Expenditure comparison



CONNECT WITH US



Rays of Hope Ministries 1st
Floor - Dossan House, Along
Glynn Jones Road, Blantyre



www.raysofhopemalawi.com



[raysofhopemalawi](https://www.facebook.com/raysofhopemalawi)

